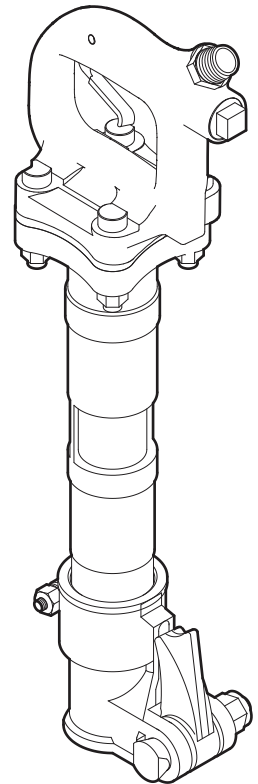




# **Spare parts list**

## **Handheld pneumatic pick hammers**

### **CP 0111 CHLA, CP 0111 CHIT**





**2009-03**

**No.9800 0886 93**

© Copyright Chicago Pneumatic Construction Tools  
STOCKHÖLM • SWEDEN



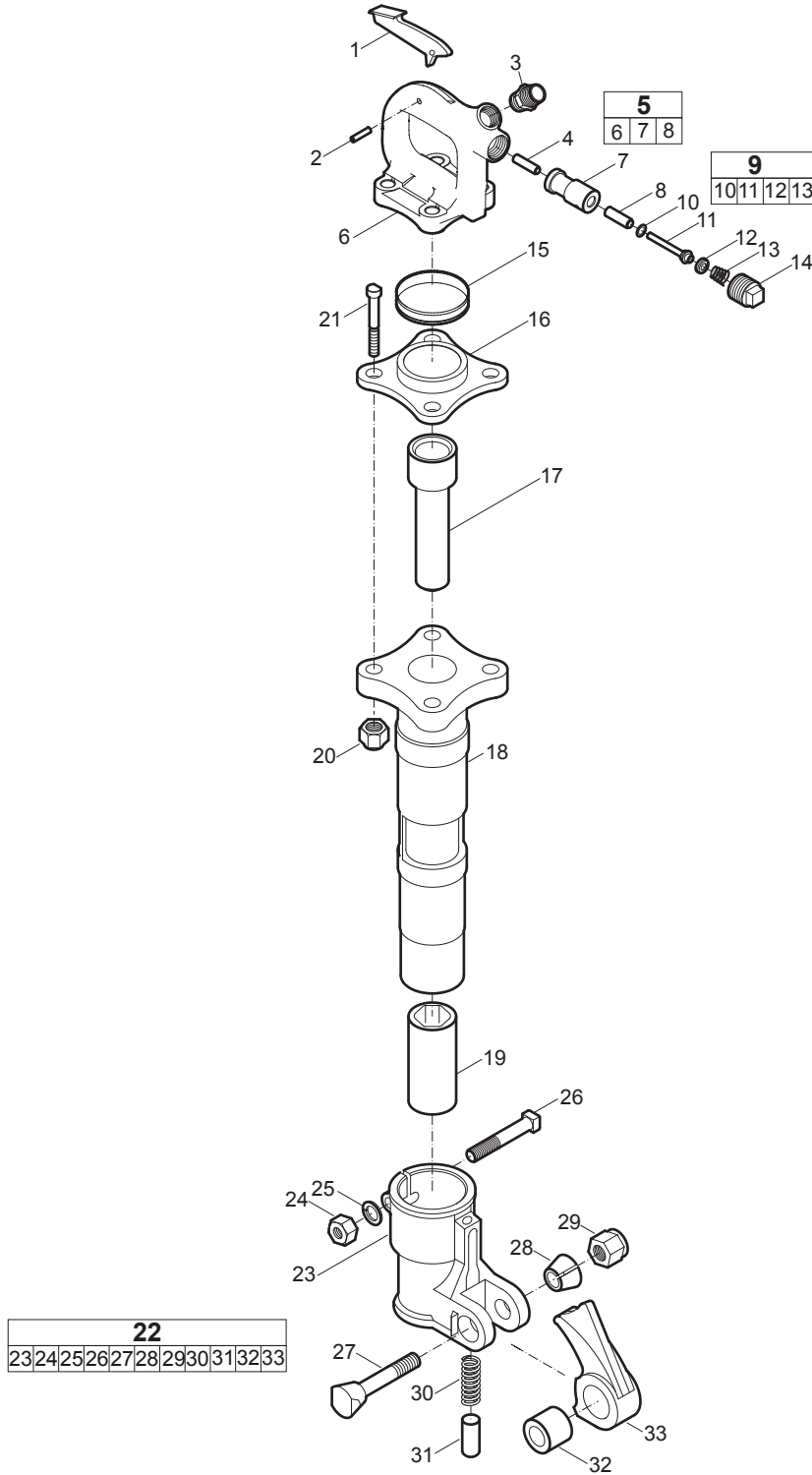
## Contents

<b>Spare parts list</b> .....	4
CP 0111 CHLA .....	4
CP 0111 CHIT.....	6
<b>Working tools</b> .....	8
ISO standard hexagon 22 x 82.5 mm ( $\frac{7}{8}$ " x $3\frac{1}{4}$ ").....	8
ISO standard hexagon 25 x 108 mm (1" x $4\frac{1}{4}$ ").....	8
US standard hexagon $\frac{7}{8}$ " x $3\frac{1}{4}$ " (22 x 82.5 mm).....	9
US standard hexagon 1" x $4\frac{1}{4}$ " (25 x 108 mm).....	9



# Spare parts list

## CP 0111 CHLA

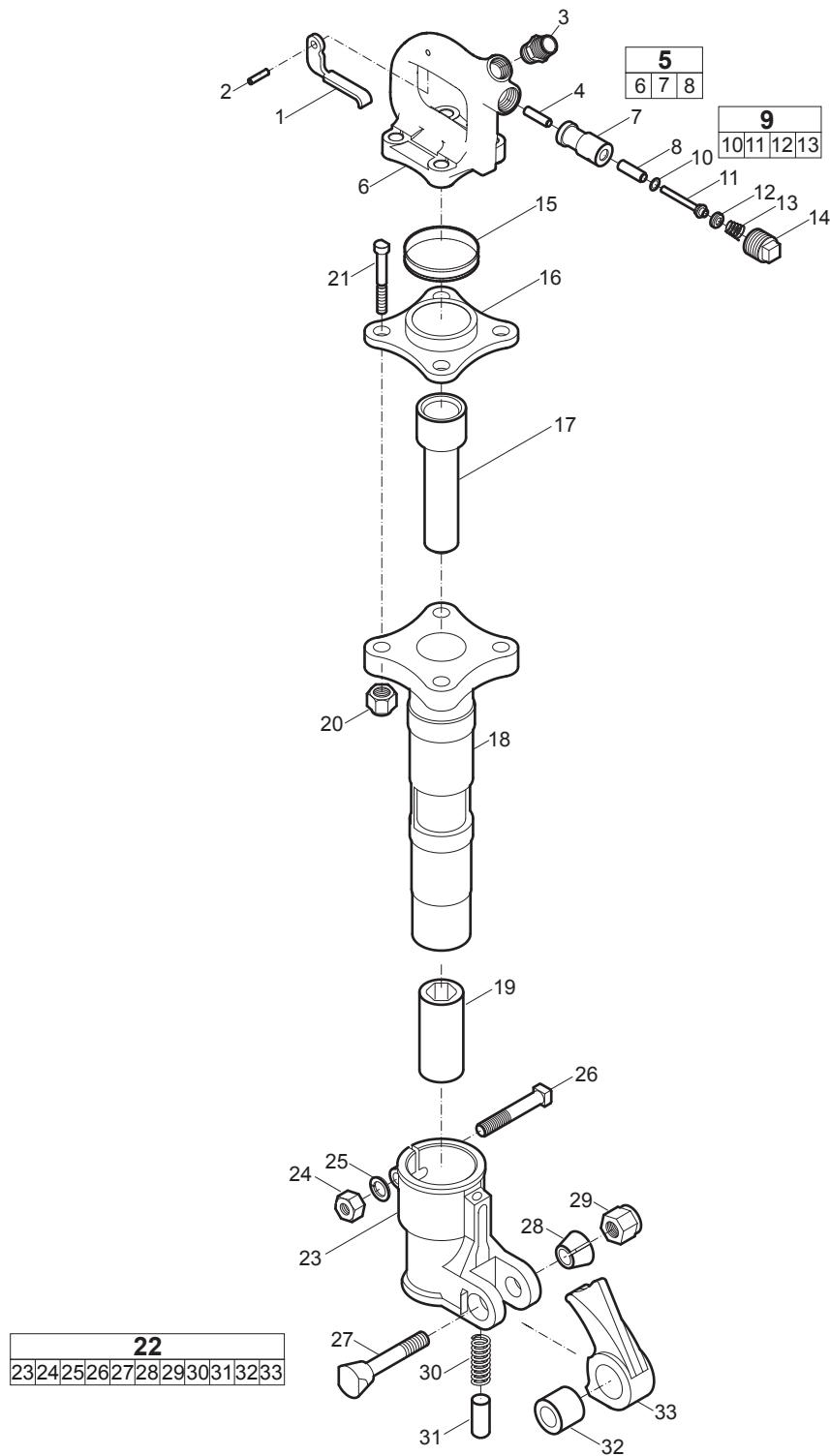




No.	Description	Remark	Quantity	Part number
1	Lever - Throttle valve		1	P003070
2	Pin - Lever		1	A043627
3	Nipple - Air inlet		1	R075227
4	Pin - Push		1	P005156
<b>5(6-8)</b>	<b>Backhead, complete</b>		1	R070114
6	Backhead		1	-
7	Bushing - Throttle valve		1	P005154
8	Bushing - Push pin		1	P005157
<b>9(10-13)</b>	<b>Throttle valve, complete</b>		1	Z8249416
10	O-ring		1	-
11	Valve - Throttle		1	-
12	Retainer - O-ring		1	-
13	Spring - Throttle		1	-
14	Plug - Throttle valve		1	P001884
15	Valve		1	R070103
16	Block - Valve		1	3303 0051 35
17	Piston		1	R070102
18	Cylinder		1	-
19	Bushing	Hexagon, 1" x 4¼"	1	R070112
20	Nut - Backhead bolt	¾" -18	4	P006099
21	Bolt - Backhead	¾" -18	4	R070111
<b>22(23-33)</b>	<b>Latch retainer, complete</b>		1	R092500
23	Head - Latch retainer		1	-
24	Nut - Head latch	½" -13	1	R000555
25	Lockwasher - Head latch		1	C036717
26	Bolt - Head latch	½" -13 x 2¾"	1	P002123
27	Bolt - Latch retainer	5/8" -18 x 3½"	1	R092498
28	Bushing - Latch retainer bolt		1	R092499
29	Nut - Latch retainer	5/8" -18	1	P081091
30	Spring - Latch retainer plunger		1	R086982
31	Plunger - Latch retainer		1	R092497
32	Bushing - Latch retainer		1	R048540
33	Retainer - Latch		1	R092493



# CP 0111 CHIT



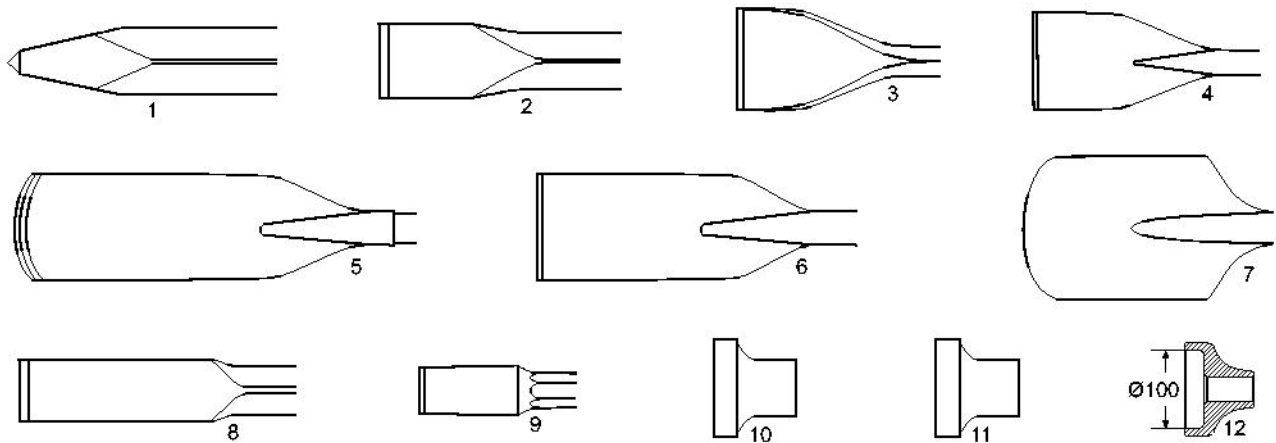




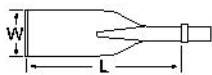
No.	Description	Remark	Quantity	Part number
1	Lever - Throttle valve		1	R093103
2	Pin - Lever		1	A043627
3	Nipple - Air inlet		1	R075227
4	Pin - Push		1	P005156
<b>5(6-8)</b>	<b>Backhead, complete</b>		1	R070114
6	Backhead		1	-
7	Bushing - Throttle valve		1	P005154
8	Bushing - Push pin		1	P005157
<b>9(10-13)</b>	<b>Throttle valve, complete</b>		1	Z8249416
10	O-ring		1	-
11	Valve - Throttle		1	-
12	Retainer - O-ring		1	-
13	Spring - Throttle		1	-
14	Plug - Throttle valve		1	P001884
15	Valve		1	R070103
16	Block - Valve		1	3303 0051 35
17	Piston		1	R070102
18	Cylinder		1	-
19	Bushing	Hexagon, 7/8" x 3/4"	1	F813919
20	Nut - Backhead bolt	9/16" -18	4	P006099
21	Bolt - Backhead	9/16" -18	4	R070111
<b>22(23-33)</b>	<b>Latch retainer, complete</b>		1	R092500
23	Head - Latch retainer		1	-
24	Nut - Head latch	1/2" -13	1	R000555
25	Lockwasher - Head latch		1	C036717
26	Bolt - Head latch	1/2" -13 x 2 3/4"	1	P002123
27	Bolt - Latch retainer	5/8" -18 x 3 1/2"	1	R092498
28	Bushing - Latch retainer bolt		1	R092499
29	Nut - Latch retainer	5/8" -18	1	P081091
30	Spring - Latch retainer plunger		1	R086982
31	Plunger - Latch retainer		1	R092497
32	Bushing - Latch retainer		1	R048540
33	Retainer - Latch		1	R092493



## Working tools

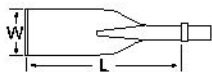


### ISO standard hexagon 22 x 82.5 mm (7/8" x 3 1/4")



No.	Description	W (mm)	L (mm)	Part number
1	Moil point	-	380	3083 3242 00
		-	1000	3083 3243 00
2	Narrow chisel	-	380	3083 3244 00
		-	1000	3083 3245 00
3	Wide chisel	75	380	3083 3246 00
4	Asphalt cutter	125	380	3083 3069 00
5	Digging chisel	75	450	3083 3247 00
6	Digging spade	120	400	3083 3248 00
7	Clay spade	125	430	3083 3249 00
8	Wedge chisel	35	380	3083 3250 00
9	Shaft for tamping pad	-	310	3083 3251 00
10	Tamping pad, round	175	-	3083 3252 10
11	Tamping pad, square	175	-	3083 3239 00
12	Driver pad, round	100	-	9245 2817 90

### ISO standard hexagon 25 x 108 mm (1" x 4 1/4")



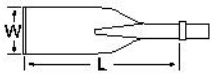
No.	Description	W (mm)	L (mm)	Part number
1	Moil point	-	380	3083 3253 00
2	Narrow chisel	-	380	3083 3254 00
3	Wide chisel	75	380	3083 3255 00





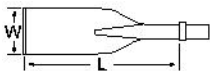
No.	Description	W (mm)	L (mm)	Part number
5	Digging chisel	75	380	3083 3256 00
6	Digging spade	120	380	3083 3257 00
7	Clay spade	125	430	3083 3033 00
8	Wedge chisel	35	380	3083 3258 00
9	Shaft for tamping pad	-	280	3083 3259 00
10	Tamping pad, round	175	-	3083 3252 10
11	Tamping pad, square	175	-	3083 3239 00
12	Driver pad, round	100	-	9245 2817 90

## US standard hexagon $\frac{7}{8}$ " x $3\frac{1}{4}$ " (22 x 82.5 mm)



No.	Description	W (in.)	L (in.)	Part number
1	Moil point	-	14	3083 4050 00
		-	18	3083 4050 10
		-	24	3083 4050 20
2	Narrow chisel	-	14	3083 3303 00
		-	18	3083 4051 10
		-	24	3083 3304 00
3	Wide chisel	4	14	3083 3305 00
		$4\frac{3}{4}$	18	3083 4052 10
4	Asphalt cutter	5	16	3083 4053 00
5	Digging chisel	3	14	3083 3306 00
6	Digging spade	$4\frac{3}{4}$	13	3083 3307 00
7	Clay spade	5	17	3083 3308 00
8	Wedge chisel	$1\frac{3}{8}$	15	3083 4057 00
9	Shaft for tamping pad	-	8	3083 4058 00
10	Tamping pad, round	7	-	3083 3252 10
11	Tamping pad, square	7	-	3083 3239 00
12	Driver pad, round	4	-	9245 2817 90

## US standard hexagon 1" x $4\frac{1}{4}$ " (25 x 108 mm)



No.	Description	W (in.)	L (in.)	Part number
1	Moil point	-	15	3083 4030 00
		-	18	3083 4030 10
		-	24	3083 4030 20
2	Narrow chisel	$1\frac{3}{32}$	15	3083 3309 00
		$1\frac{3}{32}$	18	3083 4031 10
		$1\frac{3}{32}$	24	3083 4031 20
3	Wide chisel	3	15	3083 3310 00



No.	Description	W (in.)	L (in.)	Part number
		3	18	3083 4032 00
4	Asphalt cutter	5	13	3083 4033 00
5	Digging chisel	3	15	3083 3311 00
6	Digging spade	4¾	15	3083 3312 00
7	Clay spade	5	17	3083 4035 00
8	Wedge chisel	2	15	3083 3313 00
9	Shaft for tamping pad	-	11	3083 4037 00
10	Tamping pad, round	7	-	3083 3252 10
11	Tamping pad, square	7	-	3083 3239 00
12	Driver pad, round	4	-	9245 2817 90





**2009-03**

**No.9800 0886 93**

© Copyright Chicago Pneumatic Construction Tools  
STOCKHÖLM • SWEDEN

**Chicago Pneumatic Construction Tools**